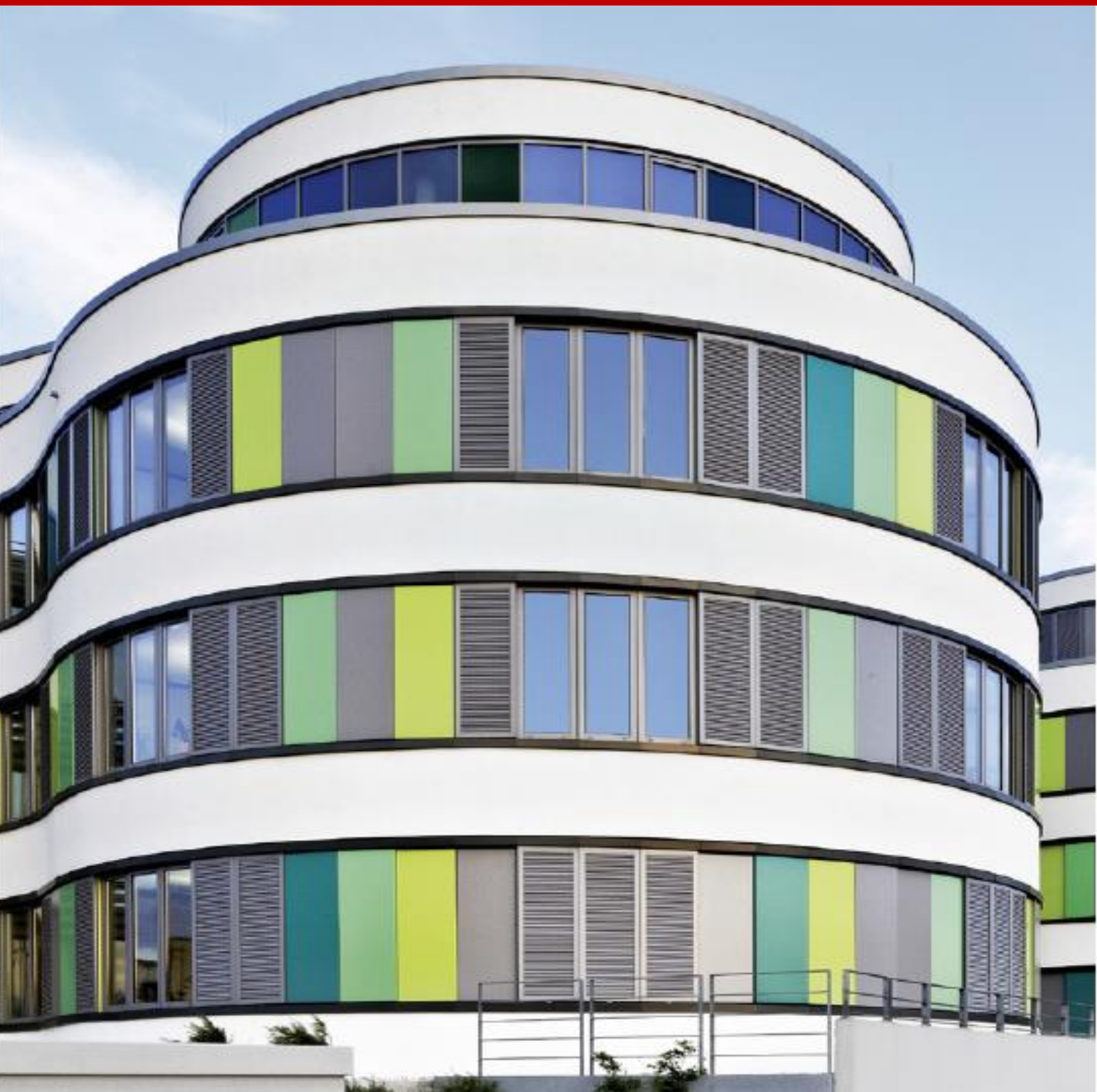


## ALUMINIUM FRAMES, FAÇADES AND SKYLIGHTS



## ALUMINIUM WINDOW SCHÜCO AWS 70

The high-quality door and window system with a great variety of solutions.

## ALUMINIUM WINDOW SCHÜCO AWS 70



Whether for the construction of a building or to ensure the renovation of residential housing, reducing energy consumption is a current priority.

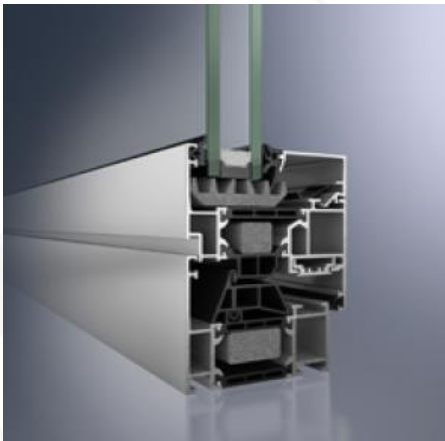
With the new AWS 70 aluminium window system, Schüco created a product capable of fulfilling every demand. Functional aspects are combined with design and architecture. Benefits such as high thermal insulation, slim or hidden profiles, the traditional manual opening or integrated electro mechanical accessories into the perfect opening inside or outside the windows.



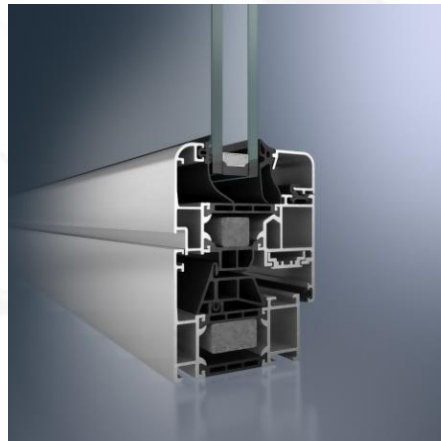
## ALUMINIUM WINDOW SCHÜCO AWS 70

**Schüco AWS 70.HI the high-quality window system with a comprehensive range of solutions.:**

- **Schüco AWS 70 SL.HI (Soft line)** - The rounded SL vent contour in conjunction with the appropriate glazing bead is an attractive solution for softer lines.
- **Schüco AWS 70 RL.HI (Residential Line)** – With its bevelled outer corners the Schüco Window AWS 70 RL.HI system is ideally suited to refurbishment projects or to add visual emphasis
- **Schüco AWS 70 ST.HI (Straight steel)** – Very narrow steel contour, is ideal both for refurbishing old steel windows or fitting new homes with attractive steel-look windows
- **Schüco AWS 70 WF.HI (Window façade)** – This system is particularly suitable for the economical construction of window façades. It offers comprehensive design options.
- **Schüco AWS 70 BS.HI** – Slimline block construction for a high-quality appearance



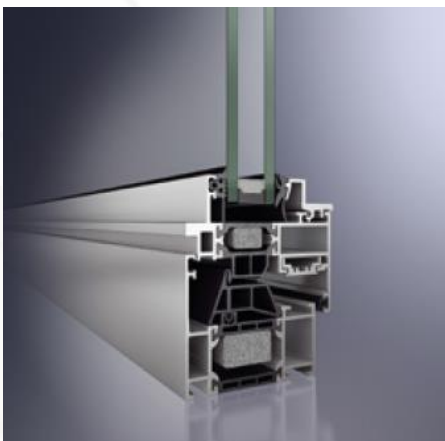
Schüco AWS 70 HI



Schüco AWS 70 SL.HI  
(Soft Line)



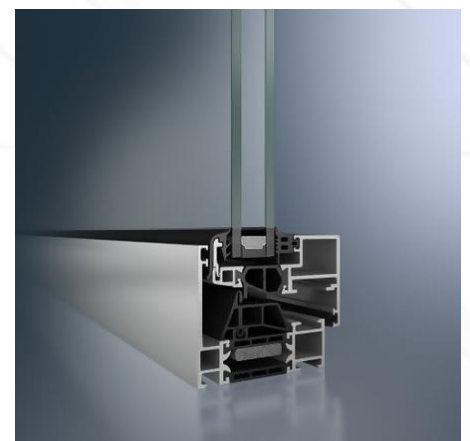
Schüco AWS 70 RL.HI  
(Residential Line)



Schüco AWS 70 ST.HI  
(Straight steel)



Schüco AWS 70 WF.HI  
(Façade)



Schüco AWS 70 BS.HI  
(Hidden profile)

## ALUMINIUM WINDOW SCHÜCO AWS 70

### ALUMINIUM WINDOW SYSTEM SCHÜCO 70. HI

#### Product benefits

- Improved thermal insulation with a basic depth of 70mm (2,76in):  $U_f$  values of 1,6 W/m<sup>2</sup>K (face width 117mm, 6,97in)
- Also available as flush-fitted vent, outward opening vent or as crank-operated turn/tilt for large, heavy units.
- Wide range of profiles including the design systems: Schüco AWS 70 RL.HI, AWS 70 SL.HI and AWS 70 ST.HI.
- Compatible with Schüco ADS door range.

### ALUMINIUM WINDOW SYSTEM SCHÜCO 70 BS.HI

#### Product benefits

- Good thermal insulation:  $U_f$  values of 1,9W/m<sup>2</sup>K.
- Also available as flush-fitted vent.
- Very narrow face widths from 67mm (2.64in) due to concealed glazing beads.
- Enlarged insulation zone with foam-filled insulation bars
- Comprehensive profile range with mullion face widths of up to 44mm (1.73in), double vents and sash bars.

### ALUMINIUM WINDOW SYSTEM SCHÜCO 70 WF.HI

#### Product benefits

- Particularly suitable for the economical construction of ribbon windows.
- Window façades are based on the Schüco AWS 70 BS.HI block window solutions
- Comprehensive design options with a choice of cover caps from the range Schüco FW 50+ façade system
- Structural mullions and the external appearance of a mullion/transom construction with a 50mm (1.97in) face width

## ALUMINIUM WINDOW SCHÜCO AWS 70

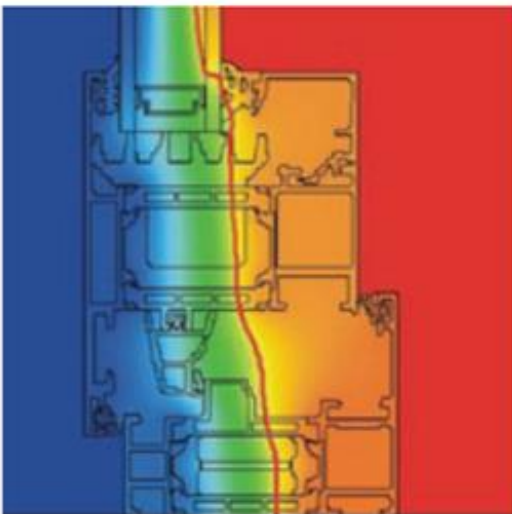
### SCHÜCO AWS 70 HI – Outward-opening window solution with centre gasket

With maximum transparency and design freedom, combined with ground-breaking thermal insulation in the tried-and-tested modular system.

The new outward-opening solutions in the Schüco AWS window systems are distinguished by their excellent thermal insulation, wide range of applications and improved fabrication.

With the new fittings concept from the simplest, standard start-up solution to multi-point locking with cavity-fitted gearbox, locking bar and Schüco Design lockable handle, the systems can fulfill the highest design, comfort and security requirements.

The new thermal insulation standard for outward-opening Schüco AWS windows.



Excellent thermal insulation with central gasket



Schüco AWS 70 HI – outward opening window

## ALUMINIUM WINDOW SCHÜCO AWS 70

### ALUMINIUM WINDOW SYSTEM SCHÜCO 70. HI – OUTWARD OPENING

#### Product benefits

- Best thermal insulation on the market for all basic depths.
- Modular system for basic depths of 50 – 70mm (1,97 – 2.76in).
- Simplified installation due to prefabricated fitting assemblies.
- Can be designed as projected top hung or side hung Windows, with a choice of concealed fittings or surface-mounted hinges.
- Maximum sizes: 2000 x 2000mm (78,74 x 78,74in) for top-hung Windows and 1450 x 1900 (57.08 x 74.8in) for side-hung windows.

## UNIVERSAL SCHÜCO HANDLES

The Schüco range of feature handles perfectly meets this requirement for residential, project and commercial construction.

The combination of a clear, timeless design and efficient technology allows use in all areas of application: window handles, lift-and-slide and tilt/slide systems, and door handles – both manually and electrically operated.



## WINDOW FRAMES, FAÇADES AND SKYLIGHTS



## FITTING SYSTEM SCHÜCO TIPTRONIC

New generation of hidden electromechanical fittings

## FITTING SYSTEM SCHÜCO AVANTEC



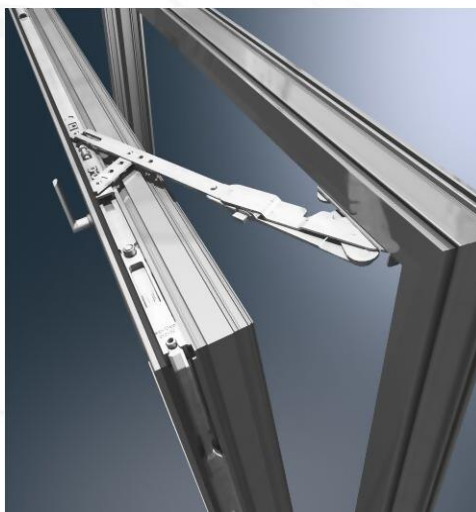
Externally invisible security with Schüco Avantec

The new generation of fittings for Schüco Avantec combines timeless design with user orientated technology and versatile functionality.

With vent weights up to 160 kg, the concealed mechanical fitting meets architectural demands for large format designs and maximum transparency. The fittings system for inward-opening, face-fitted windows also has impressive installation properties and a modular security concept up to WK3.



Schüco Avantec improved assembly



Aperture limiter Schüco Avantec



Burglar resistant WK3 with, at least, 8 locking points



## FITTING SYSTEM SCHÜCO AVANTEC

### Features and benefits

- Narrow face widths and concealed fittings ensure a streamlined appearance.
- Vent weights up to 130Kg (286lb) or 160Kg (352lb); opening angle up to 90°.
- Easier vent installation using installation clips.
- Horizontal adjustment  $\pm 1,6\text{mm}$  (0.06in).
- Self-jigging stay.
- Only one assembly tool required because all screw fittings use one ISR size.
- Schüco AvanTec remote control handle.



Hidden mechanical fittings Schüco AvanTec

## FITTING SYSTEM SCHÜCO TIPTRONIC

### Innovative technology

Schüco TipTronic is the first concealed mechatronic fitting to combine energy management, security, building automation and design.

The TipTronic system utilizes individual motors located in the window frame. The mechatronic fitting combines real time handling with the possibilities offered by the automation. The window is operated with an intuitive handle which controls its opening function with 2 buttons. Just like a conventional window, this system can be open by turning the handle.



### Tipos de abertura / Opening types



## FITTING SYSTEM SCHÜCO TIPTRONIC

### SCHÜCO TipTronic 160 Kg or 352 lb.

The window becomes an integral component of the intelligent building and makes a substantial contribution to exploiting the energy potential of the building envelope.

In addition to the large number of opening types such as side-hung ventilation vents or outward opening as well as numerous control mechanism options e.g. the number of solutions for Schüco TipTronic in the Schüco radio-controlled range has been extended.



300 mm opening width (11.81 in);

Convenient operation using Schüco AvanTec radio-controlled handle with integrated remote control;

#### Features and benefits

- Vent weight up to 160Kg (352 lb) for maximum transparency and design freedom, even when triple glazing is used.
- Opening widths of up to 300mm (11,81 in), ideal for night-time cooling or natural ventilation cycles.

## FITTING SYSTEM SCHÜCO TIPTRONIC

### Schüco TipTronic offers greater security

Unlike conventional automatic windows, the Schüco TipTronic fitting locks at multiple points and provides for increased burglar resistance up to security class WK2.

Magnetic switches are used to monitor and feedback on windows linked to the building management system and to alarm systems. An integrated anti-finger-trap device ensures that the window automatically reopens if any kind of obstacle is encountered when the window closes.

### Schüco TipTronic horizontal pivot window

The automated horizontal pivot vent as fully concealed system solution based on the Schüco TipTronic fitting offers optimum ventilation. The window vents with a vent weight of up to 150 kg (330 lb) can be opened to a width of 200 mm (7.87 in) and are therefore ideal for incorporating into central building automation.



### Features and benefits

- For use as an automatic ventilation vent.
- Ideal opening type for ventilation and for saving energy through night-time cooling.
- Window with integrated anti-finger-trap protection.
- Size options: Vent widths/heights of 700 mm (27,56 in) to 2000 mm (78.74 in).

## FITTING SYSTEM SCHÜCO TIPTRONIC

### Ventilation vent with Schüco TipTronic fitting

Automatic ventilation in buildings optimized by combining narrow side-hung vents with Schüco TipTronic fittings.

#### Features and benefits

- Fully concealed actuators allow for narrow face widths.
- Integrated anti-finger-trap protection in accordance with VFF guidelines
- Opening width up to 55° with optimum cross section for ventilation.
- Surface-mounted and concealed hinges.
- Operated via pushbutton. Remote control, PC and central building management system.



Energy saving with night-time cooling

### Schüco TipTronic for outward-opening window units

Outward-opening windows can now be opened automatically and integrated into the central building management system.

#### Features and benefits

- Fully concealed drives and hinges
- High levels of weather tightness and thermal insulation due to centre gasket system.
- Window with integrated anti-finger-trap protection.
- Use of window vents for ventilation and to cool the building.
- Operated via pushbutton, remote control, PC and central building management system.
- Opening width up to 200mm (7.87in).

## FITTING SYSTEM SCHÜCO TIPTRONIC

### Schüco TipTronic top lights with WK2 burglar resistance

The new Schüco TipTronic top light fitting is a convenient alternative to a manually operated fitting. Fully concealed fittings allow a design with narrow internal face widths.

Also, unlike manually operated fittings, no additional, surface-mounted lock is required to meet WK2 standards of burglar resistance.

#### Features and benefits

- Modular class WK2 security with robust security locking points.
- Vent weight of up to 100 Kg (220 lb) and an opening width of up to 175mm (6,89 In).
- Operated via pushbutton, remote control, PC and central building management system.



#### Convenience in window technology

Schüco TipTronic also allows windows to be operated together in groups and connected to the building management system as well as individually.

Automatic window control helps keep the building cool whilst simultaneously reducing energy costs.

In addition to ventilation function options, including night-time cooling, and controls based on time, available light and number of people present, Schüco TipTronic window technology also allows the operation of hard-to-reach windows by using remote control.



## WINDOW FITTING SCHÜCO TIPTRONIC

### Consistent design

In addition to the pure lines achieved by the concealed electrical fittings, the uniform design of the Schüco handle range also ensures an attractive appearance. The Schüco design range of handles provides a uniform appearance for windows, doors and sliding systems.



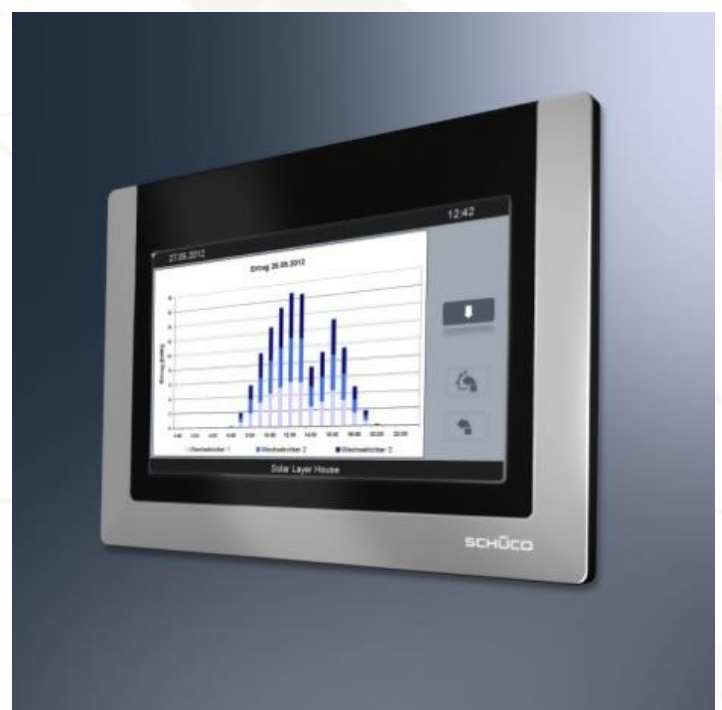
## FITING SYSTEM SCHÜCO TIPTRONIC

### Schüco ControlPanel

The Schüco ControlPanel is a practical, stylish operating unit which enhances digital building automation. All the building management, e.g. windows, solar shading and climate control, is controlled easily from one place using a touch screen. The status is shown clearly on the display panel. The display can be adjusted to suit individual requirements. The Schüco ControlPanel – a complete functional solution for building automation.

#### Features and benefits

- Simple, intuitive operation.
- Touchscreen display for operation, display and settings.
- Floor control and room control.
- Supports EIB and LON bus systems.
- Elegant design and very flat construction





## FITTING SYSTEM SCHÜCO TIPTRONIC

### Ventilação natural

Abertura e fecho de janelas, individuais ou em grupo

Natural ventilation

Opening and closing individual windows or groups of windows

### Clima

Indicador de temperatura e configuração de valores térmicos

Climate

Temperature display and setting temperature target values

### Informação

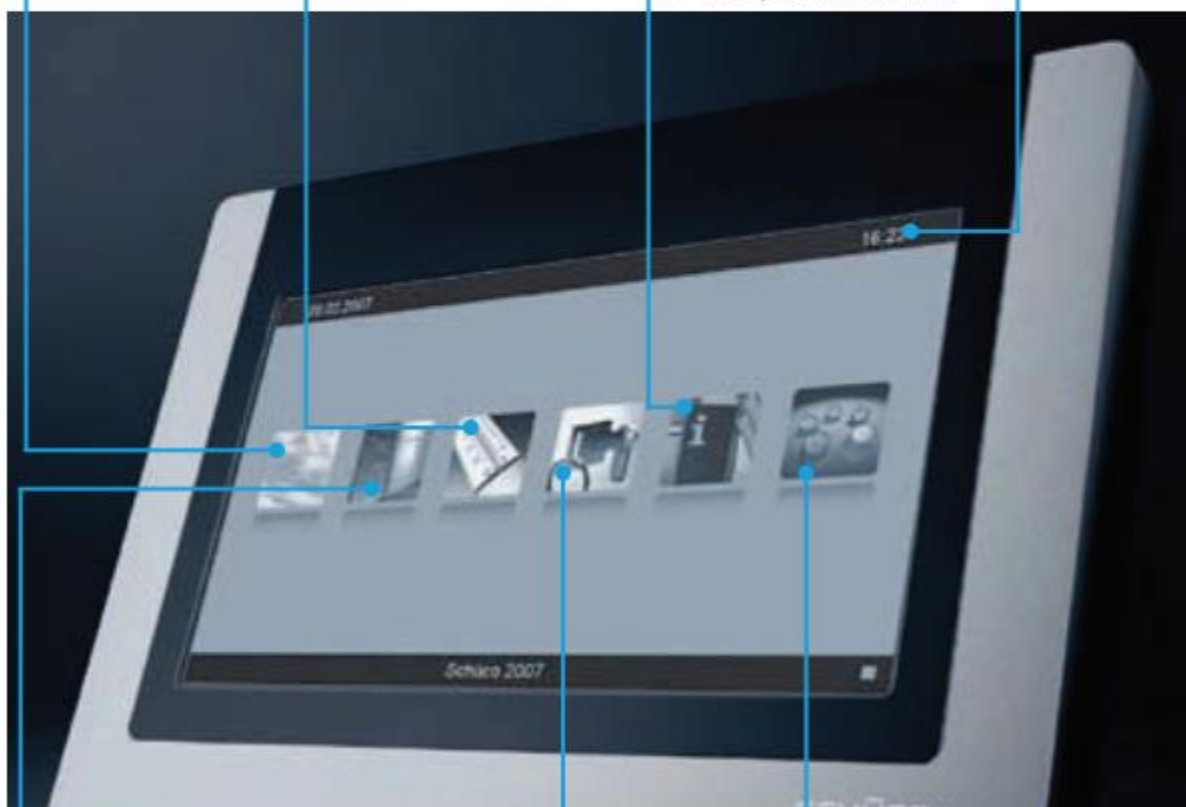
- Resumo do estado de abertura dos diferentes elementos
- Indicação de informação nova na rede

Information

- Status overview for all opening units
- Call-up of Internet news

### Hora

Time



### Luz e sombra

- Subida e descida dos elementos de protecção solar, individuais ou em grupo
- Ligar ou desligar pontos de luz ou grupos

Light and shade

- Opening and closing of individual solar shading units or groups
- Switching on and off of lights or groups of lights

### Segurança

Bloqueio e desbloqueio de portas

Security

Locking and unlocking doors

### Sequência operativa

Definição livre do processo do programa para o tempo de ventilação, sequências de luz, simulação ocupacional

User sequence

Freely definable program sequences for e.g. timed ventilation, light sequences, occupancy simulation